



# connexions

*Large Firm Resources. Personal Attention.* SM

## University of Michigan-Flint Survey Earns ACEC Merit Award

The American Council of Engineering Companies of Michigan honored a building expansion survey ROWE completed for the Regents of the University of Michigan with a Surveying Excellence Merit Award during a gala on March 10.

From December 2016-January 2017, ROWE staff successfully surveyed 15.5 acres of the University of Michigan-Flint campus to prepare for the expansion of the William R. Murchie Science Building. Although the area is fairly small, the topography and features within it are extensive. A blanket of 14 inches of snow also added a layer of challenge to the project.

In addition to the 192,000-square-foot building, the survey included part of three major campus buildings, a multi-level parking structure, a section of a heavily-treed park, and 1,520 feet of underground utility tunnels.



Above, utility tunnels were mapped using traditional survey methods beginning at the surface outside the tunnels, running down access stairways through the tunnels, and back out to the surface. The tunnel opening was physically measured at specified points where dimensions changed.



The science building's configuration was winding, several retaining walls were included in the survey, overhead walkways were mapped, and surveyors contended with a snow-covered multi-tiered plaza.

Taking advantage of available technology, shoveling snow when needed, adding people to the field at times, and working diligently during the cold, ROWE was able to exceed the client's expectations.

Left, survey included mapping the McKinnon Plaza in the area encompassed by the Murchie Science Building and two other buildings. The plaza includes circular stairways, multi-tiered retaining walls, landscaped areas, and sloped sidewalk ramps.

## ROWE's FREE Parks and Recreation Planning Session is April 30

ROWE is hosting a **free community education session from 7-9 p.m. on Monday, April 30** at its corporate office to offer parks and recreation planning tips. During this session, ROWE's community planning and landscape architecture staff will review:

- The requirements and procedures for preparing, adopting, and maintaining a five-year parks and recreation plan that meets the Michigan Department of Natural Resources' recreation planning guidelines
- Grant strategies for programs that fund park improvements
- How to integrate parks and recreation planning into a community's overall master plan and address issues such as community health and placemaking

**RSVPs are due by noon on Monday, April 23** to Rachel Yankee at (800) 837-9131 or [RYankee@rowepsc.com](mailto:RYankee@rowepsc.com). The corporate office is at 540 S. Saginaw Street, Suite 200, Flint, MI.

### What's Inside:

Director of Engineering James E. Redding, PE, LEED AP, Retires . . .	2	How the Recodified Tax Increment Financing Law Might Affect You . . .	3
Imlay City Road Rehabilitation Project Wins Quality of Life Award . . .	2	Aaron F. Leach, PLS, Named Surveyor of the Year . . .	4
DRONE Skills Save Resources . . .	3	John D. Matonich, PS, Honored with Leadership Award . . .	4
Planners Maximize Public Input . . .	3	Staff Updates . . .	4

## Director of Engineering James E. Redding, PE, LEED® AP, Retires



J. Redding

ROWE announces the retirement of Vice President and Director of Engineering James E. Redding, PE, LEED® AP, after a 40-year engineering career and many wonderful contributions to the industry. Jim earned a B.S. in civil engineering from Michigan State University in 1978 and worked for the City of Bay City before joining ROWE in 1985.

During his time at ROWE, he worked on several notable projects, including the design of the Karegnondi Water Authority's water supply intake into Lake Huron and the development of concept plans for the Buick City site in Flint. He completed projects for an array of clients, including municipalities of all sizes, the U.S. military, American Indian

tribes, and wind energy companies. He became certified in Leadership in Energy and Environmental Design in 2008 to further his skills for applying sustainable design practices to projects.

Jim is a former member of the Michigan Rural Water Association, the Water Environment Federation, and the American Water Works Association-Michigan Chapter.

ROWE greatly appreciates Jim's many years of service to the company and wishes him the best as he and his wife, Debbie, spend more time relaxing and pursuing their love of sailing the Great Lakes.



Above is ROWE's executives in the early 1990s. From left is Jim, John D. Matonich, PS, William J. Winiarski, PS, PE, the late Robert E. Mark, and the late David Rowe, PS.

---

## Imlay City Road Rehabilitation Project Wins Quality of Life Award

The City of Imlay City's project to rehabilitate Capac and North Fairgrounds roads was chosen by the American Public Works Association-Michigan Chapter for a *Quality of Life Award*.

The fall 2017 road resurfacing project included adding designated bike lanes to the streets. The lanes increase quality of life in the city by reducing emissions in the environment, making non-motorized travel along the roadway safer, and offering residents a healthy way to travel. Along with the addition of bike lanes, Capac Road was reduced from four to three lanes and both roads were resurfaced.

ROWE assisted the city with a successful Michigan Department of Environmental Quality (MDEQ) Scrap Tire Market Development Program grant application; the grant funded half of the project. The MDEQ awarded the grants later than usual, leaving ROWE less time than expected to design and develop bid documents. However, throughout the project, ROWE and contractor James P. Contracting worked efficiently to complete work in a timely manner.

The award presentation will be May 24 at the Grand Traverse Resort and Spa in Acme, MI.



Left is Capac Road at its intersection with M-53 before completion of the project; below is after completion of the project.



Scrap tires used in the pavement on North Fairgrounds Road (pictured at left) and Capac Road helps the environment and may save the city money over time.

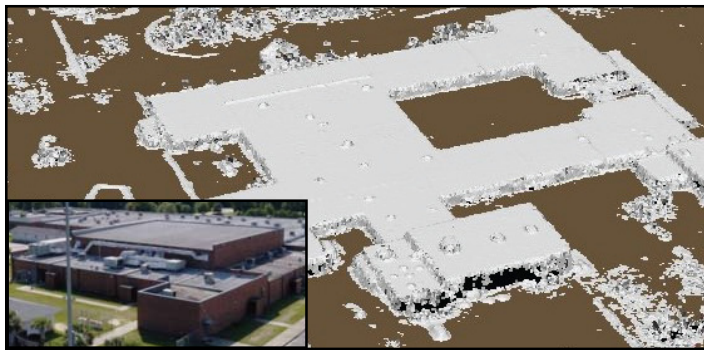
## DRONE Skills Save Resources

Almost anyone can fly dynamic remotely operated navigation equipment (DRONE), but it's unlikely they have the DRONE skills or software to develop accurate imagery and mapping projects. ROWE's FAA-licensed pilots and photogrammetrists are helping clients save time and money with high-quality equipment and post-processing capabilities.

After capturing the images, ROWE creates surface measurements to generate 3D models, accurately-scaled photographs (orthophotos), and topographic mapping for engineering and design projects. DRONE technology can be mobilized quickly and allows for the observation and mapping of features at frequent intervals, providing documentation of sites or structures over time. Photos can be shared on social media, a website, or distributed with public meeting agendas. Images can be viewed by project team members electronically for timely review, saving resources and money.

Having a portfolio of before and after documentation for projects is a great way for a community to demonstrate its, or its partners', hard work. This can be helpful when conducting public relations, seeking community, state, and federal buy-in, and applying for grant funding.

To explore whether DRONE technology could be useful for your project, contact Project Manager Gregory N. Lemke, CP, at (800) 837-9131 or [GLemke@rowepsc.com](mailto:GLemke@rowepsc.com).



With DRONE images of a school (inset), ROWE created this cloud point, which engineers can pull into CADD to use for design purposes.

## Planners Maximize Public Input

The City of Burton, MI has a new tool to help them plan their bright future – a master plan adopted Jan. 19, 2018. ROWE assisted the city of 30,000 with developing the plan, placing a focus on public engagement. The range of techniques utilized to collect valuable input from the community included:

- Developing a project Facebook page
- Using SurveyMonkey® and Community Remarks® to collect comments online
- Conducting interviews with focus groups and stakeholders
- Conducting a community visioning session, a youth charrette, and a master plan open house

The project incorporated information from a Target Market Analysis and Retail Market Analysis prepared by subcontractor LandUse/USA.



Left, ROWE helped facilitate a visioning session for residents to discuss and record their ideas for the future. Here, participants analyze an area of the city before working together to write down their thoughts about good or bad uses for that area.

Right, ROWE Director of Landscape Architecture Douglas R. Schultz, PLA, (pictured on left) led a youth charrette during which ideas were collected from children in elementary through high school grades.



## How the Recodified Tax Increment Financing Law Might Affect You

A new bill changing some of the tax increment financing requirements was recently signed into law. To sum up a few key changes in the law, it:

- Merges six previous laws regarding tax increment financing into one law.
- Requires authorities (such as downtown development authorities and corridor improvement authorities) to publish information on their website and make an annual update about their activities available to the public.
- Modifies the reporting requirements to the Michigan Department of Treasury by requiring the treasury to create a uniform form for use by all authorities capturing tax increment revenues.

For assistance with understanding the law, contact Senior Planner Doug Piggott, at (800) 837-9131 or [DPiggott@rowepsc.com](mailto:DPiggott@rowepsc.com).

## Aaron F. Leach, PLS, Named Surveyor of the Year

The South Carolina Society of Professional Land Surveyors (SCSPLS) named ROWE Project Surveyor and Associate Aaron F. Leach, PLS, its Surveyor of the Year.

Aaron was recognized by the non-profit organization of approximately 300 members due to his commitment to promoting the industry and his outreach to the next generation of surveyors. The award selection group noted he serves on the National Society of Professional Surveyors' Trig\*Star Committee and chairs the SCSPLS committee for the Trig\*Star program, which is a high school program that promotes the study of trigonometry and builds awareness of the surveying profession. He also speaks at several middle and high schools throughout the year about the field of land surveying. Aaron's community volunteerism includes assisting local Girl Scouts with earning their tree badge.

In recognition of this achievement, the South Carolina House of Representatives co-sponsored a resolution to honor Aaron. The resolution can be found here.



Aaron receives a copy of the resolution from Rep. Heather Ammons Crawford.

## John D. Matonich, PS, Honored with Leadership Award

ROWE Chairman of the Board John D. Matonich, PS, received the Vernon B. Spalding Leadership Award from the American Council of Engineering Companies of Michigan (ACEC/M).

Matonich was recognized by the organization of more than 100 member firms due to his outstanding leadership roles in ACEC/M, several other surveying and engineering industry organizations, and the community. Past leadership roles include serving on Michigan's Natural Resources Commission, president of the National Society of Professional Surveyors, and chair of the Flint and Genesee Chamber of Commerce. He continues to serve in several leadership roles, including as a member of the Surveying Curriculum Advisory Committee at Michigan Technological University and a member of the Gogebic County Road Commission.

He retired as ROWE's chief executive officer in 2016, where he worked for 35 years, and now resides in Marenisco, MI.



J. Matonich

## Staff Updates

### Staff Member Earns License

**Dakota P. Roberts, PE**, earned his professional engineer license. Dakota is an assistant project engineer in the Design Services Division in the Flint, MI corporate office. He is a three-year ROWE employee who has M.S. and B.S. degrees in civil engineering from Michigan Technological University.



D. Roberts

### The ROWE Team Expands

- **Trevor R. Stevens** joined ROWE as graduate engineer in the Design Services Division in the Mt. Pleasant, MI office. He has a B.S. in civil engineering from Michigan Technological University and experience gained from two MDOT internships.
- **Kenneth L. Thorp, PE**, joined ROWE as senior project manager in the Design Services Division in the Flint, MI

corporate office. He has a B.S. in civil engineering from Michigan Technological University and 35 years' design engineering experience.

- **Ryan P. Whiteherse, PE**, joined ROWE as a project manager in the Design Services Division in the Flint, MI corporate office. He has a B.S. in aerospace engineering from University of Michigan and 17 years' experience in design and construction engineering.
- **Hong Zhou, PhD, PE**, joined ROWE as a senior engineer in the Design Services Division in the Farmington Hills, MI office. She has a Ph.D. in civil engineering from Ohio University, an M.S. in municipal engineering from Chongqing University, and a B.S. in water and wastewater engineering from the Tianjin Institute of Urban Construction. She has five years' research and consulting experience, specializing in water resources engineering, land development, and highway/roadway drainage design.

For questions about these projects and more, contact Director of Corporate Marketing Jack Wheatley, PE, at [JWheatley@rowepsc.com](mailto:JWheatley@rowepsc.com) or (800) 837-9131.

**Corporate Office:** 540 S. Saginaw St., Ste. 200, Flint, MI 48502, (810) 341-7500  
**Lapeer:** 128 N. Saginaw St., Lapeer, MI 48446, (810) 664-9411  
**Mt. Pleasant:** 127 S. Main St., Mt. Pleasant, MI 48858, (989) 772-2138  
**Farmington Hills:** 27260 Haggerty Rd., Ste. A-7, Farmington Hills, MI 48331, (248) 675-1096

**Lansing:** 1000 S. Washington Ave., Ste. 104, Lansing, MI 48910, (800) 837-9131  
**Grayling:** 2342 Industrial St., Ste. A, Grayling, MI 49738, (989) 348-4036  
**Tri-Cities:** 419 N. Madison Ave., Bay City, MI 48708, (989) 894-4001  
**Myrtle Beach:** 511 Broadway St., Myrtle Beach, SC 29577, (843) 444-1020  
**Air-Land Surveys:** 540 S. Saginaw St., Ste. 200, Flint, MI 48502, (810) 762-6800