

Connexions

Large Firm Resources. Personal Attention. sm

ROWE Professional Services Company Celebrates Golden Anniversary

This year, ROWE is celebrating five decades of success. Sticking to our founder's original philosophy of doing what's best for the client in the long term, getting involved personally, and giving back to our communities has made this longevity possible.

In 1962, a young David T. Rowe, PE, PS, founded Rowe Engineering and Surveying Services. It began with a small survey crew and a receptionist in the basement of his Davison, MI home. Today, the company has expanded to more than 100 employees in six offices, five in Michigan and one in South Carolina. Along with land surveying and civil engineering, services have broadened to include aerial photography/mapping, landscape architecture, planning, and land development.

Some ROWE achievements to note:

- ROWE's first out-of-state project was in 1982 in Montana; today, staff includes engineers licensed in 16 states and surveyors licensed in 9.
- Our number of MDOT-funded projects has grown from one in 1974 to currently more than 70 per year.
- ROWE has provided landscape architecture services for numerous projects since the addition of the division in 1991, including more than \$15 million of non-motorized pathways.
- Since purchasing Air-Land Surveys in 2002, ROWE provides clients with aerial mapping and photogrammetry services nationwide.

ROWE truly appreciates the opportunity to team with fantastic clients for the past 50 years and ardently looks forward to providing "large firm resources with personal attention" throughout the 21st century.



ROWE's principals have always been hands-on and can be found working in the field, as humorized here in 1993.



ROWE employees give back to the community.



ROWE's work has been featured in many magazines.

Staff Make Adrian's Trailway Wish a Reality

In 2011, ROWE helped the City of Adrian, MI staff and residents realize their 25-year-old dream of connecting an existing trail to their southernmost community park, Riverside Park. ROWE was the design engineer for scoping, concepts, permits, construction drawings, and construction assistance for 0.13 mile of trailway and elevated boardwalk design (pictured at left, bottom) and 83-feet of prefabricated non-motorized bridge (pictured at left, top) over the River Raisin in the city. Staff completed FieldManager duties for this Michigan Department of Transportation-let project and provided onsite FieldBook documentation to support city staff.

The \$453,000 project was funded by a federal Congestion Mitigation and Air Quality Improvement Program grant and a 20 percent match from the city.

"The ROWE staff developed an easy working relationship with our staff, with the contractors, and with the MDOT staff. They were always responsive to any questions or situations that arose and provided workable solutions for any of the typical roadblocks that pop up during a construction project," said Mark Gasche, City of Adrian parks and recreation department director.

A parking lot and trailhead meeting ADA compliance in a flood-prone area was also developed.

An Adrian resident emailed this message to Gasche soon after the project was completed: "I went for an early morning run today and picked up the Kiwanis trail at Maumee heading towards Riverside Park. The run into the park was absolutely beautiful at sunrise. My hat is off to you and everyone else that is responsible for making that happen."

A sewer interceptor project was completed simultaneously with the bridge project.

"This created some logistical problems, but with ROWE's oversight and communication, the projects were able to proceed seamlessly without interruptions," Gasche remarked.



Projects' Space Constraints, Tight Timelines Conquered

Staff in ROWE's Myrtle Beach, SC office is tackling challenging beach access projects for the City of North Myrtle Beach.

ROWE is on a design build team with Bill Clark Homes to complete projects at three sites. The projects include creating a paved access and parking area on thin strips of land between existing multi-family developments to replace natural paths people utilize to reach



A family takes a trip to the beach via one of the new paved accesses.

the beach from the road. Also included are the construction of restroom facilities and public showers and the implementation of erosion-control measures.

Like most "infill" projects, the limited area and fixed constraints of the existing developments make the design and construction of the projects tricky. Also, the desire to open one of the sites in early summer, only a few months after the project award, kept the team hopping.

ROWE's responsibilities for the projects include construction staking and engineering reviews of site and grading plans prepared by the City of North Myrtle Beach's engineering department.

ROWE Projects Honored

ROWE was a team member for the completion of several projects recently recognized for excellence.

The Michigan Concrete Association Award of Excellence:

I-94 reconstruction/rehabilitation project in Jackson County, MI
Michigan Recreation & Park Association Design Award: Paradise Peninsula Playscape at Waterford Oaks County Park, Waterford, MI
The American Public Works Association-

Michigan Chapter Projects of the Year: Cold-in-place recycling project in the City of Charlotte, MI and the Village of Vernon, MI's wastewater lagoon and collection system upgrade

The Flexible Pavements of Ohio Association: Reconstruction of the truck entrance at the General Motors Defiance, OH Powertrain Plant



Above, Vernon lagoon; below, GM plant entrance.



Creativity Keeps Project Budget in Check Despite Design Changes

Change orders make clients cringe, but innovative thinking helped ROWE maintain Community Mental Health for Central Michigan's (CMHCM) budget during a recent project at the company's Mecosta County Center in Big Rapids, MI. The design changes even made the project, which included a new stairway and retaining wall, more durable and easier to maintain.

ROWE was the design and construction engineer for replacing an aging and unsightly retaining wall, sidewalk, and staircase.

The Isabella Corporation of Mt. Pleasant, MI was the contractor.

The original design was to use segmental block stairs for aesthetics and ease of construction. Due to durability concerns with heavy salting and the possibility of future settlement issues, the decision was made to pour concrete stairs.

Providing greater clearance between the door at the top of the staircase and the stairs was another change in the design. This required moving the retaining wall by 6 inches, which permitted installation of a stronger handrail system. However, with only 16 inches between the upper-level door and lower-level window, one of the two lower level windows had to be enclosed. Once the window issue was resolved, the retaining wall could be installed with greater setback per block, creating a sturdier wall. Enclosing the window was an added expense; however, eliminating unnecessary railing from the design saved money and kept the budget on track.

"Sometimes changes like that can increase costs, but ROWE really worked with us on that," said Kim Boulier, CMHCM program director for Mecosta and Osceola Counties.

Creating greater clearance at the top of the staircase, and installing a sturdier stainless steel rail sounded wonderful, but installation on a 13 1/2-foot tall helix shape proved tricky.

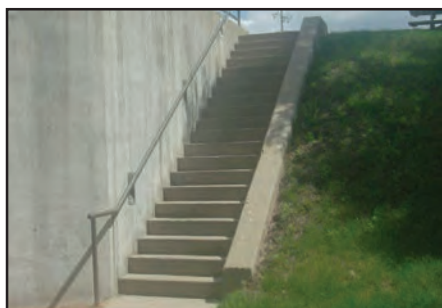
"Staff were terrified of the steep steps – they didn't even want to walk down them in the winter," Boulier said. "It was ROWE's idea to design them on a curve, which really helped so they didn't have to be so steep. Replacing the flimsy railing makes it safer too."

Mecosta Center Office Manager Paula Hunter worked closely with ROWE on the project and said she was happy with the experience and the results.

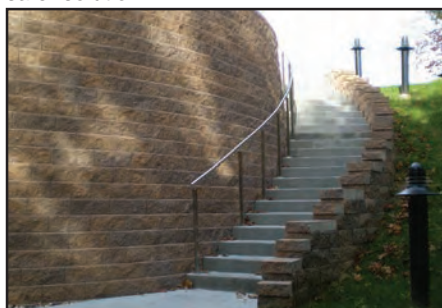
The ROWE project team knows the challenges were worth it!



Above, the original second level landing; below, new wire railing creates airy feeling.



Above, the original stairway; below, the safer solution.



Air-Land Surveys Coordinates Three Out-of-State Companies to Complete Mapping Project for U.S. Army Corps of Engineers

Air-Land Surveys (ALS), a ROWE company, proved its ability to successfully complete projects that require coordination with multiple agencies located in various parts of the U.S. One of its recent projects, performed for MWH Americas Inc. and Missouri River Energy Services, was to map a 100-acre site centered on the Des Moines River at the outflow of the dam at Red Rock Lake near Pella, IA. The purpose was to provide a base map for the design of a new 55-megawatt hydroelectric facility to be located just below the Red Rock Dam operated by the U.S Army Corps of Engineers.

To complete the project, ALS staff in Flint, MI coordinated the services of three companies, each located in different Iowa cities.

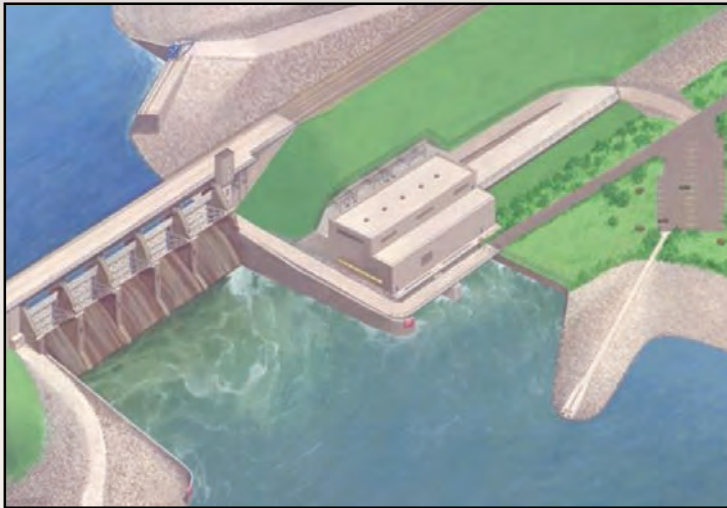
- A land surveyor to measure photo control and perform utility surveys of the existing structures on the site.
- An aerial photography company to perform low-altitude aerial photography to produce digital topographic mapping of the area around the lake and river.
- A bathymetric surveyor to survey above the dam and part of the

Des Moines River below the dam spillway, which required the use of Sonar equipment. Where water was too shallow to allow Sonar measurements, GPS surveys were conducted to fill in the required elevation detail.

After this work was completed in Iowa, ALS produced the deliverables in Michigan. A single digital terrain model that covered the hydrographic and topographic survey data area was assembled and contours for the entire surface were computed and submitted in a single AutoCAD drawing file. High-resolution digital orthophotography was also produced.

Construction of the new hydroelectric facility is expected to begin in 2013. It is anticipated that the facility will become operational in 2016.

For more information about ALS' services, contact Production Manager Greg Lemke, CP, at 800-447-1627 or glemke@airlandsurveys.com.



This rendering shows what the Red Rock Dam Hydroelectric Facility will look like when completed. It should be operational by 2016.



This aerial photograph, which shows the project area at Red Rock Lake and Dam and the Missouri River, was used to generate topographic mapping.

ROWE Offers Floodplain Services

As government office staff field concerns from residents about expensive floodplain insurance, they may want to refer them to ROWE for assistance with answering questions. Experienced floodplain surveyors are located in all ROWE offices and can help people whose lenders are requiring them to purchase flood insurance.

The National Flood Insurance Program has been in existence since the 1970s. However, the ongoing map modernization program and renewed scrutiny of homeowners' insurance requirements have increased the need for homeowners to understand the program and its impact. The map modernization program has been controversial. Some communities that previously did not have mapped floodplains must now map them. Communities that had existing floodplains may now have to identify larger floodplain areas.

If a property is located in a high-risk area for floods, purchasing flood insurance is mandatory for all federally-related financial

assistance. Lenders may still require the owners of properties located in medium- to low-risk areas to purchase flood insurance during the life of their home loan, even though it is not a federal mandate.

For people whose homes are considered in a floodplain, but whose homes are located on high ground, the only resort to reduce the cost of, or avoid paying, flood insurance is a Letter of Map Amendment stating revisions made to a Federal Emergency Management Agency flood map. ROWE can assist residents with the application process and complete a flood elevation assessment. Typically, these field surveys can be completed in one day; combining multiple properties in a neighborhood can decrease the cost of the survey to the individual homeowners.

For more information, contact Survey Project Manager John Rauser, PS, at 800-837-9131 or JRauser@rowepsc.com.

Staff Updates

Project Manager is Promoted

Jeremy M. Lynn, PE, has been promoted from project manager to senior project manager. He is an associate owner who works out of ROWE's corporate headquarters in Flint, MI where he serves as a construction and safety engineer and oversees the construction division.



Lynn

extensive work with the inspection and management of general site construction.

- Mitchell J. Hastings joined the Special Services Division as an Engineering Technician II. He earned a B.S. in construction engineering from Central Michigan University. His experience includes four construction seasons serving as a construction inspector/technician, including time spent as a co-op student for the Michigan Department of Transportation.

Staff Earn Professional Licenses



Sorenson

- Cole A. Sorenson, PS, recently earned his professional surveyors license. He is an assistant project surveyor who works out of ROWE's Grayling, MI office. His job includes collecting field measurements using total stations and GPS equipment, assisting with construction testing services, preparing finished CAD products, and performing project research.



Westbrook

- Justin A. Westbrook, PE, recently earned his professional engineer license. He is an assistant project engineer in the Civil Utilities Division who works out of ROWE's corporate headquarters in Flint, where he assists with the design and analysis of various road and infrastructure projects.

Graduate Engineers Join ROWE Team

- Samantha M. Kalakay joined the Civil Utilities Division as a graduate engineer. She recently earned a B.S. in civil engineering from Trine University and plans to obtain a professional engineer license. Her experience includes working for ROWE as an intern for five summers.
- Nicholas J. Ryan, EIT, joined the Civil Utilities Division as a graduate engineer. He recently earned a B.S. in civil engineering and one in civil surveying from Michigan Technological University (MTU) and is pursuing professional engineer and surveyor licenses. His experience includes working as a lab technician in the cementitious materials lab at MTU and serving as an intern at ROWE in summer 2011.
- Ashley M. Hufnagel joined the Special Services Division as a graduate engineer. She earned a B.S. in civil engineering at Lawrence Technological University and plans to obtain a professional engineer license. She comes to ROWE with one year of experience with another engineering firm and the skills she learned from an internship with the Michigan Department of Transportation.
- Nathan A. Raburn joined the Transportation Division as a graduate engineer. He earned a B.S. in civil engineering from Western Michigan University and plans to obtain a professional engineer license. His experience includes one year of work at another engineering company and the skills he learned from an internship with MDOT.

Engineering Group Expands

- Mark A. Helinski, PE, joined the Transportation Division as a senior project manager. He graduated from Michigan State University with a B.S. in civil engineering and has more than 20 years of bridge design and project management experience.
- Deveron Q. Sanders, PE, joined the Civil Utilities Division as an assistant project engineer. He earned a B.S. in civil engineering from the University of Michigan and is currently pursuing an M.S. in operations management at Kettering University. His 10+ years of experience includes



Helinski

Don't Miss Our Community Education Series

Are you aware ROWE offers multiple FREE education seminars every year? The two-hour sessions are led by our planning, engineering, or survey department staff and provide valuable information for government or elected officials and contractors. Subjects include everything from sample language for ordinances to GPS-controlled machine grading.

At our March program, a bond attorney and representatives from the Michigan Department of Environmental Quality, United States Department of Agriculture - Rural Development, and Michigan Economic Development Corporation reviewed funding programs and grant opportunities for various types of projects, including sewer, water, and downtown revitalization. They explained many aspects of these opportunities, such as qualifications and deadlines.

ROWE Planner J. Douglas Piggott, AICP, PCP, shared information about the Right to Farm Act with a crowd of more than 50 representatives of rural and urban communities at a session in April. He answered many questions, such as "How far can we go to 'zone out' agricultural operations from certain areas of our community?" and, "To what extent can we adopt ordinances that regulate agricultural operations?"

Our planning department has scheduled a seminar for **October 24** at The Rowe Building in Flint, MI. Our engineering department is developing a program as well, with a date and topic to be announced soon. Check www.rowepsc.com for more information as details are finalized.



540 S. Saginaw St., Suite 200
PO Box 3748
Flint, MI 48502
(810) 341-7500

127 S. Main St.
Mt. Pleasant, MI 48858
(989) 772-2138

128 N. Saginaw St.
Lapeer, MI 48446
(810) 664-9411

419 N. Madison Ave.
Bay City, MI 48708
(989) 894-4001

403 Huron St.
Grayling, MI 49738
(989) 348-4036

511 Broadway St.
Myrtle Beach, SC 29577
(843) 444-1020



540 S. Saginaw St., Suite 200
PO Box 3748
Flint, MI 48502
(810) 762-6800