

Q1 2024

connexions

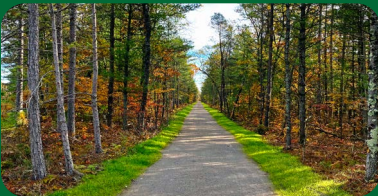
Newsletter

WHAT'S INSIDE



Fenton Road Bridge

The Fenton Road bridge is complete. ROWE provided design engineering, right-of-way acquisition, and construction engineering for this structure.



Iosco Exploration Trail

At 5.58 miles, the Iosco Exploration Trail has expanded transportation routes between schools, businesses, and recreational destinations in Oscoda Charter Township.

PROJECT SPOTLIGHT

LAKE LANSING PARK SOUTH

South Lake Lansing Park is undergoing exciting upgrades! With ROWE's assistance on survey, permitting, design, and construction administration, the park will be accessible for all ages and abilities.

Funded by the Michigan Department of Natural Resource's Land and Water Conservation and Michigan Natural Resource Trust funds as well as county millage and cooperative funding from Meridian Township.

SEE MORE on pg.4



HASLETT, MI

Large-Firm Resources. Personal Attention.



UNITED WAY CONTRIBUTIONS



For 21 years, we have partnered with United Way to make a difference in our community and enjoy fun activities with our colleagues. Our 2023 activities included stuffing 84 animals in support of Voices for Children Advocacy Center, pumpkin bowling, a chili cook-off, and cider and donuts.



GIVING BACK TO OUR COMMUNITY



A MESSAGE FROM OUR CEO

Leanne H. Panduren, PE, FNSPE

In this issue, you will see some photos of our staff participating in our 2023 United Way Campaign activities. ROWE has partnered with United Way for 21 years and many of our staff choose to make donations each year as well as participate in the fundraising activities we hold in our office during this three-week period. Every year, our team puts together a schedule of fun activities like our chili cook-off, bake sales, turkey bowling and more. One activity we've added in recent years is the Service in a Box. While enjoying a working lunch with their officemates, this year our team members assembled stuffed animals for the children receiving services at Voices for Children, a local advocacy center serving child abuse survivors. In previous years, we've put together dog toys for the Genesee County Humane Society and Halloween Treat Bags for children living at Whaley Children's Center. This great program, coordinated by the United Way is an easy way to give back to our community while enjoying time together.

In addition to the United Way Campaign and other charitable contributions made by ROWE throughout the year, our staff give back to our communities in a variety of other ways. Some examples include:

- **Adopt-a-Highway** – ROWE maintains the shoulders of the I-69 service drives between the Saginaw Street and Grand Traverse Street on-ramps.
- **Pop Can Donations** – Throughout the year, all pop cans at the Flint office are donated to a variety of causes, generally for high school sports teams or other clubs that are connected to our team members.
- **Non-perishable Item Donations** – Throughout the year, we collect a variety of items for Catholic Charities of Shiawassee and Genesee County.
- **Holiday Giving** – Staff in our offices coordinate activities like coat drives, adopt-a-family, and other community programs to support those in need in their local communities.
- **Charitable giving** – Each year our ROWE Strictly Social Group coordinates a raffle during our Annual Meeting and all funds raised go to support a local charity.
- **Volunteering** – Many of our staff are involved in local community, school and children's sport organizations where they donate their time and talent in a variety of ways.

Whichever path our team members choose to engage and give back, we support their efforts.

LAKE LANSING SOUTH PARK

Fun for All Ages and Abilities

South Lake Lansing Park is undergoing exciting upgrades! With ROWE's assistance on survey, permitting, design, and construction administration, the park will be accessible for all ages and abilities.

Funded by the Michigan Department of Natural Resource's Land and Water Conservation and Michigan Natural Resource Trust funds as well as county millage and cooperative funding from Meridian Township, this project included:

- Demolition and construction of a new bathhouse and concessions
- Permeable accessible parking
- Vegetated bioswales
- Interpretive historical signage
- Shower towers
- Accessible sidewalks
- Plaza
- Site furnishings
- Site lighting
- Fencing
- Site utilities



SEE MORE on pg. 6



building has individual restrooms and changing areas, a room for first aid and staff, as well as an improved concession area and tables located close to the beach. Solar picnic tables with charging stations were an exciting innovation, along with permeable pavement parking areas.



This improvement project complemented ROWE's previous award-winning dock and fishing pier located within the park. The accessible multi-purpose dock was a 2021 Facility Design award winner, and it facilitated not only the needs of the fishing community but also boaters and park visitors in a sustainable manner. The docks were designed with fish habitats under them, including a mixture of accessible boat slips and fishing areas with varying railing heights, and accommodates boat rentals, temporary boat tie-ups, and a future universally accessible kayak launch.



With park visitor counts at approximately 1,600 to 2,000 per day on a summer weekend, these prior and new improvements create a more accessible environment for all to enjoy!

LAKE LANSING SOUTH PARK

HASLETT, MI

From 1934-1974, the site was an amusement park location. ROWE used historic photos to prepare interpretive signage that recognized various features of the site and preserved existing sidewalks that contained embossed donor names. Siting the building was also key to addressing the lakefront and still allowing adequate lawn area for sunbathers along the beach.

To lessen the impact of rain events due to the flat land and high water table of the site, ROWE incorporated site grading, french drains, underdrains, and the use of a rain garden. Various aged utilities were also upgraded throughout the park. While the new concession building and restrooms were being completed, the construction sequence maintained the existing restroom facilities within the park. The new restrooms and concession



FENTON RD BRIDGE

FLINT, MI

NOW COMPLETE!

The Fenton Road bridge over the Thread Creek reconstruction is now complete! ROWE provided design engineering, right-of-way acquisition, and construction engineering for this structure.

Originally constructed in 1924, the existing bridge had deteriorated along with the sidewalk on the east side of the road. This deterioration caused concern for both pedestrians and roadway users. With the help of MDOT Local Bridge funds, ROWE investigated 11 different layouts for the realignment of Fenton Road and/or the Thread Creek. These options included realigning Fenton Road to the south of I-69, realigning Fenton Road to the north of I-69, relocating the Thread Creek channel, and creating dead ends on Fenton Road. All but one of these options were ruled out due to railroad right-of-way constraints, EGLE constraints, and National Highway System requirements. The proposed design includes 5-foot-wide ADA accessible sidewalks and ramps along both sides of the roadway, along with 12-foot lanes and shoulders.

There were additional challenges encountered during construction. While excavating for the abutments, a layer of garbage was discovered that contained old glass bottles and other miscellaneous debris. Because of this, the soil had to be tested and was found to contain heavy metals including lead, barium, and chromium and had to be disposed of in a land fill.

The Fenton Road Bridge now serves as a safe to travel structure and can handle all legal vehicles!









CLIO ELEMENTARY SCHOOL



Elementary Expands to Promote Higher Enrollment

The new and improved Clio Elementary is open for the 23/24 school year! Formally known as Garner Elementary, the renovated building is an expansion that will now house kindergarten through third grade.

WHAT'S NEW

-  Two STEAM labs
-  Media center
-  Multipurpose room
-  Gymnasium
-  New HVAC systems
-  Interactive televisions
-  Lights
-  Flooring
-  Freshly painted walls



ROWE assisted with the survey, design, and construction of the 30,000 square foot building expansion and associated parking, stormwater, playground, and circulation improvements. The concept site design development included close coordination between the architect, owner, and civil team for adding building space to the existing site, accommodating storm water requirements, and adding features such as **playground space** and **appropriate circulation and parking**. A traffic study was completed to forecast circulation issues related to drop-off and pick-up areas based on age

groups. Evaluating options for bus and vehicular areas proved to be the biggest challenge.

In hopes to increase their enrollment numbers, the Clio Area Schools are planning additional enhancement projects including a new stadium, improved classrooms in the middle school, and high school renovations. In the 1970s, they enrolled more than 5,000 students. Today, the average enrollment is less than 3,000. Ultimately, this project will kickstart the steady increase in those numbers!





PILOT PROJECT

WAYNE COUNTY, MI

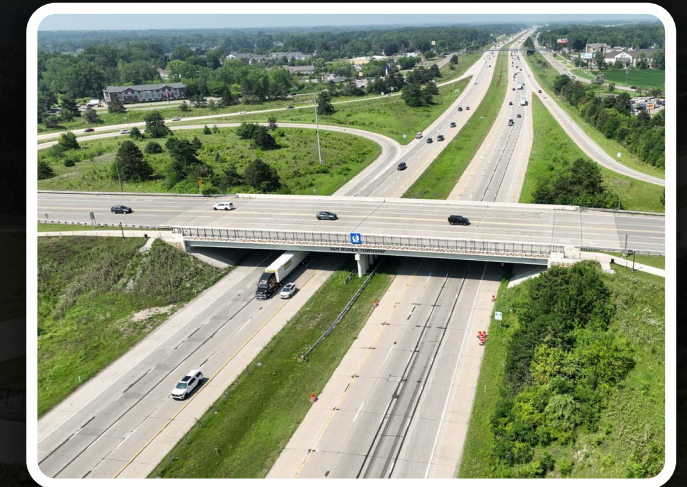
PRIVATELY FUNDED

3.0 MILES

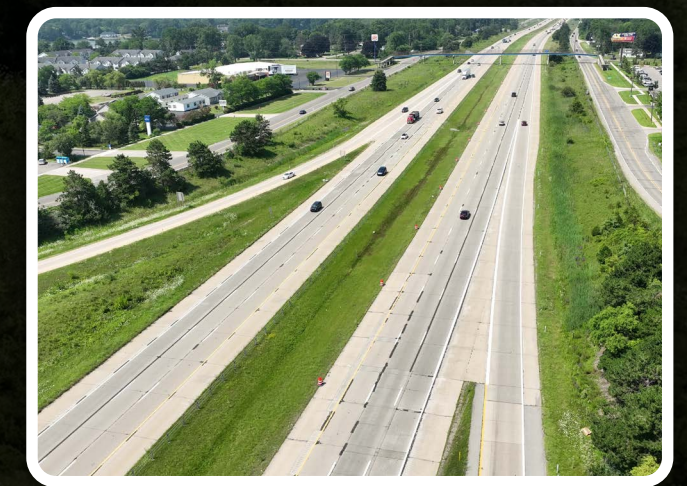
BUILDING THE FUTURE

Michigan's first connected automated vehicle (CAV) lane is underway! With the help of ROWE providing full construction engineering services, which includes project management, inspection, staking and material testing, the three-mile stretch of westbound I-94 from Belleville to Rawsonville roads will have improved safety and accessibility features. This pilot project is just a piece of the innovative transportation infrastructure being introduced to our state. Cavnu, the Master Developer of this advanced road, and the Michigan Department of Transportation (MDOT) teamed up to identify a 25-mile segment of Interstate 94 that will serve as the country's first corridor of tech-enabled infrastructure for connected and autonomous vehicles.

This privately funded pilot project includes 3.0-miles of roadway widening, hot mix asphalt (HMA) paving, high friction surfacing, concrete base course, a lane separator system, 76 ITS/light poles, drilled shafts, and ITS equipment on WB I-94 from Belleville Road to Rawsonville Road in Wayne County. Digital infrastructure such as an underground electrical conduit, unique ITS devices, and various programming will be a significant component of the project, which brings its own challenges in addition to the logistics of having a separated lane on a major freeway.



The work on this corridor will enhance safety and accessibility within the local community. With more mobility access, advanced vehicles and fully automated driving systems will be better supported. The intent of this project is to transport vehicles safely and efficiently, all while providing advanced vehicular technology. The overall driving experience will be improved, as well as the equity for roadway users and residents.



From the words of Michigan Governor Gretchen Whitmer, "The action we're taking today is good for our families, our businesses, and our economy as a whole. Here in Michigan, the state that put the world on wheels, we are taking the initial steps to build the infrastructure to help us test and deploy the cars of the future". This is just the beginning of future-proofing corridors around the nation, and we are thrilled to be a part of it!



IOSCO EXPLORATION TRAIL



Expanding Non-Motorized Transportation

ROWE is excited to have completed the newest addition to the Iron Belle Trail! At 5.58 miles, the Iosco Exploration Trail has expanded transportation routes between schools, businesses, and recreational destinations in Oscoda Charter Township.

To provide this non-motorized transportation route, ROWE performed surveying, design engineering, permitting, construction engineering, and assisted with funding applications and administration. The project was funded by the Michigan Natural Resource Trust Fund, Transportation Alternative Program, United States Department of Agriculture, Iron Belle Trail Foundation, and other local funding through Iosco County, totaling \$3.3 million.

5.58 MILES



With the local area having limited entry to local attractions, the trail opens opportunities for outdoor enthusiasts to **hike, bike, walk,** and enjoy **recreational sports**. Prior to these changes, nearby businesses faced a barrier to attracting new customers, and now this trail has allowed easier exploration for groups of new campers, visitors, and tourists. Oscoda Charter Township will continue to benefit from this trail because it actively provides community wealth and health building, a safe route for trail users, and is a symbol of appreciation for the environment.

The Iosco Exploration Trail is a seven phase (44-mile long) segment of the Iron Belle Trail that connects communities from Iron Wood, Michigan all the way to Detroit, Michigan. Being the longest state trail in the nation, it attracts visitors from all around the country. It is ensured for long-term success through the upkeep of maintenance, which is supported through the funding and investment of the Iosco Exploration Trail Committee. The majority of the Exploration Trail was made with crushed limestone using a special aggregate mixture. It included easements from the United States Forest Service, Consumers Energy (Hydro and Land), and Michigan Department of Natural Resources.

ROWE did encounter some challenges while working on the Exploration Trail. The beautiful outlook along the AuSable River required an archaeological survey to be completed beforehand. Additionally, there were compounding construction restrictions with clearing over 3,000 trees along the corridor due to the Long-Eared Bat. Another species that delayed the project was the Eastern Massasauga Rattlesnake, a threatened species under the U.S. Endangered Species Act. Because of this, an environmental review of all phases of the trail was required from the USFS.

Located along the scenic route of River Road, the Iosco Exploration Trail allows alternative connections to key destinations such as Oscoda Community Schools, downtown Oscoda, Foote Site Village, AuSable River Queen, and the Old Orchard campground. The trail encourages physical fitness, heart health, and reflects upon mental health awareness. It supplies access to a variety of natural resources and conserves the environment. ROWE is thrilled to be able to provide this recreational opportunity to the Oscoda Charter Township.



WALDO & MONROE ROUNDAABOUT

THERE'S NO WAY AROUND IT: ROUNDAABOUTS SAVE LIVES

Midland County is now home to a new roundabout in Larkin Township! ROWE provided full topographic survey and design engineering at the Waldo Road and Monroe Road intersection to allow Midland County to transform this formerly two-way stop controlled intersection into a safe, compact roundabout.

The Waldo Road and Monroe Road intersection had been the site of twelve injuries, three serious injuries, and one fatality in the last ten years. High speeds on Waldo Road, as well as sight distance limitations for drivers on Monroe Road, were some of the factors that contributed to the intersection's safety issues. Traffic volumes were such that a signal or a four-way stop were not warranted, so it was determined that a roundabout would be the safest intersection type for

this location. While the roundabout will not eliminate all crashes, it will reduce speeds and crash severity, in addition to improving operations, and reducing emissions.

OTHER BENEFITS:

- **Despite being a compact roundabout, which aren't typically found in rural locations, it was designed in a way to accommodate large trucks and frequent use by large farm equipment.**
- **Added LED advance warning signage for increased safety**
- **Reducing conflict points**
- **Improving intersection operational performance**

Nearly nine percent of all roadway deaths happen at rural intersections. The MDOT High Risk Rural Roadway (HRRR) safety funding focuses on addressing the significant issue of rural traffic fatalities. The Midland County Road Commission (MCRC) applied for safety funding in 2019 due to the frequency of serious crashes at this location. The project received \$600,000 of HRRR funds with the remaining costs covered by MCRC funds.

This is the second compact roundabout that ROWE has partnered with the Midland County Road Commission on in the last five years at a high crash frequency rural intersection. Our team faced right-of-way challenges as well as some pushback from the public due to opposition towards roundabouts. ROWE developed multiple iterations of the roundabout layout as right-of-way negotiations progressed over a nearly two-year period. Eventually, ROWE was able to develop a design that provided the necessary safety benefits, while minimizing impacts to the adjacent homes, wooded area, and

WHY ROUNDAABOUTS? ✓

76% REDUCTION IN INJURIES

36% REDUCTION IN ALL CRASHES

90% REDUCTION IN FATALITIES

the surrounding drainage system. Three of the four quadrants had right-of-way challenges with buildings in close proximity, and several utilities and a county drain adding design constraints. As Michigan continues to construct more roundabouts, the safety statistics will demonstrate the positive change they bring!

Statistically shown, roundabouts provide a 76% reduction in injuries, 35% reduction in all crashes, 90% reduction in fatalities. People are less likely to be involved in a crash while using roundabouts than any other intersection type. ROWE is proud to have partnered with the Midland County Road Commission to bring this safety addition to the Midland community!

* Statistics provided by the U.S. Department of Transportation Federal Highway Administration

PORT HURON PLAZA

A VISION FOR PORT HURON

With the help of ROWE to create a vision for redevelopment, residents and visitors to the City of Port Huron can look forward to a new plaza to be located on a major corner in downtown.



⬆️ BEFORE PICTURES ⬆️

This privately funded project allowed ROWE to develop a concept master plan that creates access to both the Michigan Mutual and Community Foundation buildings. The concept is equipped with additional green space, new landscape, easy to move tables and chairs, bike racks along the Bridge to Bay Trail, and accent lighting. The new work will protect existing trees and serve the public as a place to sit and relax.

The concept plan for the plaza has a 25-30-foot diameter space for the traditional location of the community Christmas tree and supplies numerous electrical outlets which can be used for food and special events. This project will complement the improvement of the waterfront park across from the plaza.

The Community Foundation of St. Clair County Plaza will be providing the City of Port Huron an aesthetically public-private space at the gateway of downtown. ROWE hopes that it continues to exhibit the goodwill of the foundation, and that memories will be made!

ROWE WRAPPED

MOST REWARDING

Buick City

Over the past 30 years, ROWE has worked on the Buick City site in various capacities. As a young engineer, I remember being on an active manufacturing site and designing pumping facilities to decant contaminants from the ground water. It was an impressive facility. A few years later, Buick halted production and began the dark process of decommissioning the facility. The site sat vacant for many years and was essentially a wasteland in the heart of Flint. Over the years, ROWE has prepared numerous concept plans with prospective developers, but none went anywhere.

In October of 2022, Ashley Capital contacted us with another such plan, although this one appeared to be different as they specialized in rehabilitating contaminated sites. They came to us with a solid team already in place and desired to use our local knowledge and past experience to develop this site. Being an integral part of the team has been very rewarding. ROWE staff were involved from the start and witnessed the first stages of this site's transformation. ROWE plans to be a part of the team for the long haul and looks forward to seeing this site becoming a vibrant part of the City of Flint again. - **Douglas Scott, PE, LEED@AP, Senior Project Manager**

Though the site was complex and challenging from a surveying perspective, it was very rewarding to be part of a team participating in the redevelopment of an area that had been dormant for decades. - **Kenneth Perry, PS, Project Manager**



Southern Lakes Phase II

ROWE assisted the Genesee County Drain Commissioner's Office of Water and Waste Services (GCDC-WWS) by completing construction documents to expand the Southern Lakes Water System. Phase II of the Southern Lakes Water System will supply clean, safe drinking water to parts of Fenton Township and will eventually be expanded to serve the City of Linden and other parts of southern and western Genesee County. The project required collaborative team communication both internally and with other firms and agencies to meet deadlines set by funding agencies. It was a rewarding project from two standpoints. First and foremost, working on a project that will supply clean, safe drinking water to the residents of southern Genesee County, and second, how the team communicated and worked together to complete the design on time and within budget. - **David Richmond, PE, Senior Project Manager**

“
Supply clean, safe drinking water to the residents of southern Genesee County”



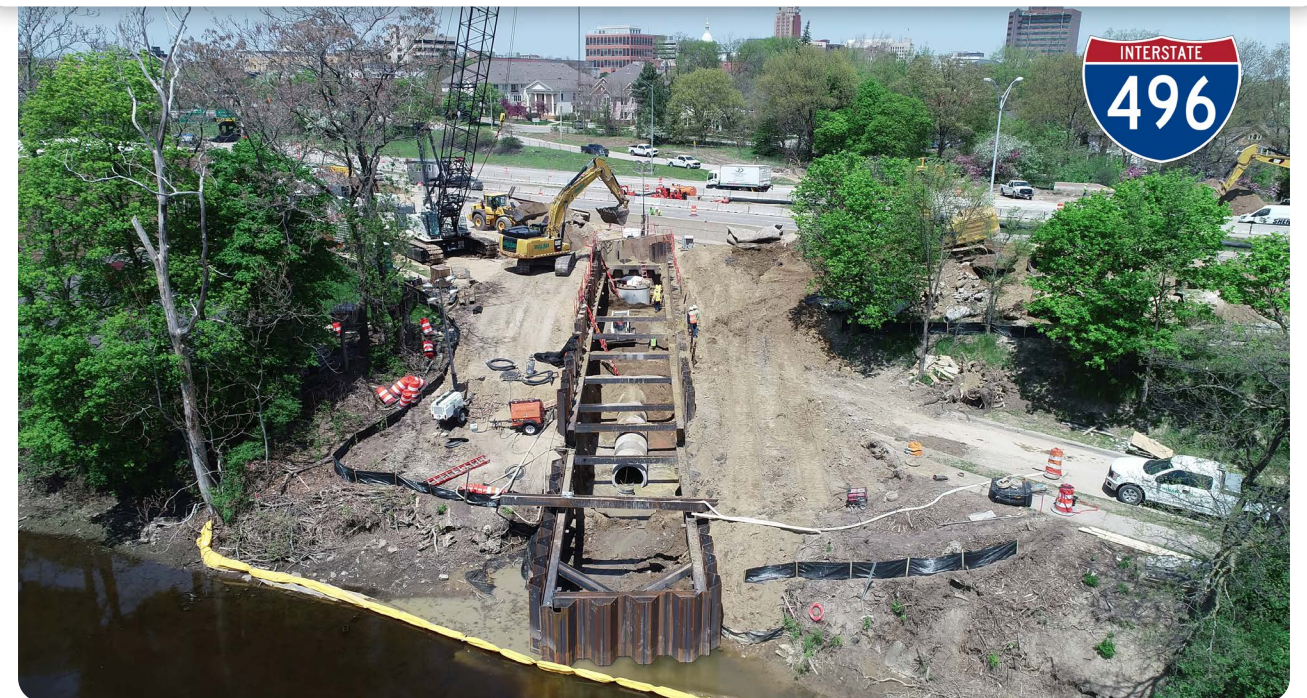
MOST CHALLENGING

I-496 Design Build

Design-Build projects inherently start with the challenge of tight schedules and coordination with multiple entities, and the \$80 million I-496 reconstruction through downtown Lansing was no exception. ROWE tackled design challenges, as well. The drainage design presented unique challenges associated with replacing a 60-inch diameter storm sewer trunkline below this depressed freeway, at depths over 25 feet in some locations. Flow through the existing trunkline needed to be maintained while the new trunkline was constructed, and a carefully crafted phasing plan was developed. To meet water quality requirements, a hydrodynamic separator that was 12 feet in diameter and 30 feet high was designed and installed on the trunkline. The depth and size of the trunkline and separator necessitated significant coordination with all members of the design

build project team, including roadway, structural, geotechnical, utilities, MOT, and construction.

The project also included several large storm water and sanitary sewer siphons that had not been fully scoped as part of the contract documents. These were critical facilities for the City of Lansing that could not be shut down, making their repair and replacement difficult. We developed successful strategies to replace or rehabilitate these siphons without significant cost increases or impacts to the maintenance of traffic, both very challenging tasks. It required researching and reviewing old plans not originally available to our team and working with the City of Lansing, the Contractor, and their subcontractors to determine the best course of action. - **Cheryl Gregory, PE, Senior Project Manager**



MOST UNIQUE

I-94 Cavnué

This first of its kind project in Michigan includes 3.0 miles of shoulder widening, concrete base course, HMA paving, high friction surface treatment, a lane separator system, 76 ITS/light poles, drilled shafts, conduit and ITS equipment on WB I-94 from Belleville Road to Rawsonville Road, Wayne County. The intent of this pilot was to install digital infrastructure to support connected and automated vehicles in the corridor. This project is particularly unique as it is the first connected and automated vehicle roadway in Michigan. ROWE's construction engineering team worked closely in partnership with the private development company, Cavnué, and the Michigan Department of Transportation to oversee and facilitate the necessary infrastructure for this pilot. - **Michael Royalty, PE, Director of Business Development**



South Lake Lansing



Once a popular amusement park, Lake Lansing Park South is located in Haslett on Lake Lansing, attracting over 180,000 people each year. The project included demolition and new bathhouse, permeable accessible parking, vegetated bioswales, interpretive historical signage, shower towers, accessible sidewalks, plaza, site furnishings, site lighting, fencing, and site utilities. JFR architects provided a nautical themed concession and restroom / bathhouse. The building's orientation was key to allowing views to the lakefront and providing adequate lawn area for the sunbathers along the beach. The site was a former carnival location; ROWE used historic photos to prepare interpretive signage that recognizes key locations throughout the site. The project included comprehensive improvements throughout the park to provide greater accessibility and circulation, addressing 60-year-old infrastructure and requiring phased sequence of construction to keep the park open to the public. - **Douglas Schultz, PLA, Senior Project Manager**

ATTRACTING OVER
180,000
PEOPLE EACH YEAR

MOST EXCITING

Mackinac Bridge

In 2023, ROWE was selected to perform full construction engineering services to assist the Mackinac Bridge Authority (MBA) with a rehabilitation project on the southern truss spans (Pier 1 to Pier 17) and on the northern viaduct spans (Pier 34 to Pier 48) of the Mackinac Bridge. This project included curb and joint replacement among other operations. The ROWE team was excited and honored to be able to work on one of the most iconic structures, not only in Michigan, but in the Nation. This project allowed ROWE to meet and work with the talented engineers and staff of the MBA. ROWE's attention to detail and collaboration with the MBA led to the successful completion of the project. ROWE is even more excited that we have been recently selected for another contract to provide full construction engineering services to assist the MBA with the next two-year project on the Mackinac Bridge that begins this coming Spring. The award of this second contract is a testament to the quality of work performed by our staff and the excellence that the ROWE name brings to our clients and their projects. - **Michael Roberts, PE, Senior Project Manager**



Gordie Howe International Bridge Survey Support



This was the second phase of survey support (staking and as-builts) for the DTE distribution pipeline construction at the US Point of Entry site for the Gordie Howe International Bridge. Coordination was especially important since the bridge was funded by the Canadian Government through the Windsor-Detroit Bridge Authority (WDBA), the work was managed by Bridging North America (BNA), and ROWE survey was a sub-consultant to DTE GAS. Involvement in such a fast-paced, large-scale, international project, with enhanced safety requirements, increased security measures, and use of global datum made this an exciting project for both our field crews and office staff. - **Henry Horton, PS, Senior Project Manager**

FUNDED BY



SOUTH CAROLINA 2023 PROJECTS

MOST REWARDING

Horry County Fire Stations

With the continued development in Horry County, it has been ROWE's pleasure to help provide three additional Horry County Fire Stations. Once small volunteer stations, these stations have been increased in size 200% with the addition of two bays. ROWE provided design of water and sewer, parking lots, grading, landscaping and stormwater drainage. - **Ryan Harvey, PE, Senior Project Manager**



MOST CHALLENGING

Magnolia Farms

Master planning a 900-lot subdivision has had its challenges. First, we needed to annex the property into the City of Florence. The property crosses over Florence County into Darlington County. Second, a traffic study was done that required two left turns to be designed that would widen Hoffmeyer Road more than the entire roadway frontage. The master planning for the sewer also had its challenges. The sewer force main needed to be designed to run down Hoffmeyer Road inside the SCDOT right-of-way full of existing utilities. - **Ryan Harvey, PE, Senior Project Manager**

LARGEST SUBDIVISION

in the City of Florence

OVERALL

LONGEST
STRETCH



US-131
13.4 Miles

BIGGEST
TEAM



US-23
10-12 ROWE Employees

ROWE CULTURE





MILESTONES

- **John H. Rauser, PS** – 35 years
- **Byron J. Campbell** – 25 years
- **Gregory N. Lemke, CP** – 20 years
- **Sarah M. Whiting, PE** – 15 years
- **Justin A. Westbrook, PE** – 15 years
- **Jeffrey B. Markstrom, PE** – 15 years
- **Blake D. Strozier** – 10 years
- **Brian M. Sarkella, PE** – 10 years
- **Douglas J. Robert** – 10 years
- **Debra L. Locascio** – 10 years
- **Kevin P. Janes, PE** – 10 years
- **Kent A. Edwards, PE** – 10 years
- **Troy A. Trevarrow** – 5 years
- **Karl H. Steffes** – 5 years
- **Joshua J. Roddy** – 5 years
- **Laura B. Partyka** – 5 years
- **Steven A. Ludwick** – 5 years
- **Alec V. Kluck, PE** – 5 years
- **Paul M. Horning, PS** – 5 years
- **Ryan E. Harvey, PE** – 5 years
- **Forrest W. Grenat, PS** – 5 years
- **Ronald G. Donajkowski** – 5 years



Q1 2024 ACHIEVEMENTS

Michigan Professional Engineer License

- Travis R. Hamel, PE
- Nathan J. Whitting, PE
- Matthew J. Motz, PE

PHR Certification

- Christina A. Killinger, PHR

SHAREHOLDER ADDITIONS

Five new Associates have been added to our shareholder group. Their individual expertise and perspective will add value to the overall Associate group.

- **Ryan D. Bair, PE** - Project Manager
- **Daniel G. Feenstra, PS** - Project Manager
- **Amanda N. Hemeyer, PE** - Senior Project Manager
- **Scott C. Hemeyer, PE** - Project Manager
- **Kevin P. Janes, PE** - Project Manager

ART OF ACHIEVEMENT AWARD

On November 9th, ROWE CEO and President, Leanne Panduren, PE, FNSPE, attended the Flint and Genesee Group's Art of Achievements Awards, which serves to recognize small and large businesses as well as community leaders who have shown dedication to their community. Leanne was awarded the C.S. Mott Award, an award that honors a Greater Flint citizen who has made significant contributions to the community. ROWE couldn't be happier with its honorable representative!



SOCIAL

MEDIA



Be sure to follow us on social media to keep up with our newest projects, events, and announcements!



ROWE

CAREERS

We recognize talented, self motivated, and open-minded professionals are the key to ROWE's continued success and growth.

Email: employment@rowepsc.com
 ROWE is an Equal Opportunity Employer



NEW HIRES

KATHERINE M. JOHNSON

Job Title: Accounting Clerk
Office: Flint, MI
Month: December 2023

ANGEL L. BELL

Job Title: Graduate Planner
Office: Flint, MI
Month: December 2023

AMANDA L. ADAMS

Job Title: Administrative Secretary
Office: Flint, MI
Month: December 2023

FUN FACTS

ESTABLISHED

1962

PROFESSIONALS

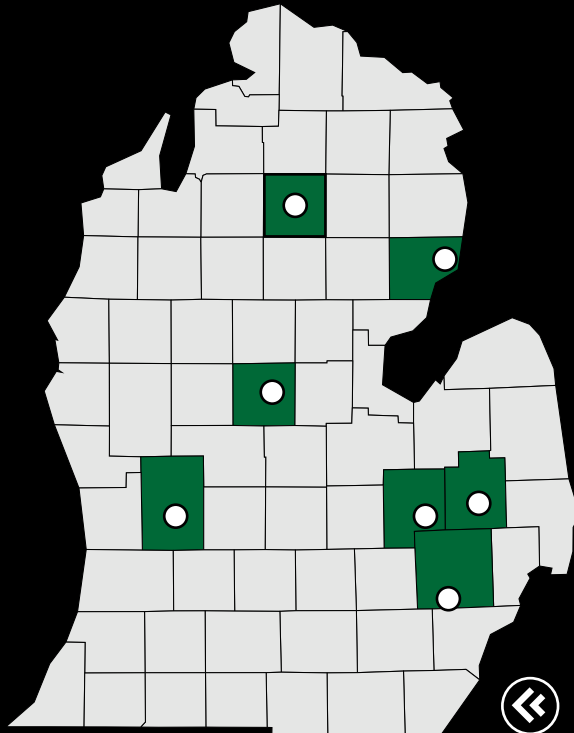
220+

LOCATIONS

8

ENR TOP 500

#424



◀ MICHIGAN



SOUTH CAROLINA ▼

Flint, MI

540 S. Saginaw Street, Suite 200
Flint, MI 48502
(810) 341-7500

Lapeer, MI

128 N. Saginaw Street
Lapeer, MI 48446
(810) 664-9411

Grand Rapids, MI

507 36th Street SE
Grand Rapids, MI 49548
(616) 272-7125

Farmington Hills, MI

27280 Haggerty Road, Suite C-2
Farmington Hills, MI 48331
(248) 675-1096

Mt. Pleasant, MI

127 S. Main Street
Mt. Pleasant, MI 48858
(989) 772-2138

Grayling, MI

2342 Industrial Street, Suite A
Grayling, MI 49738
(989) 348-4036

Oscoda, MI

212 N. State Street
Oscoda, MI 48750
(800) 837-9131

Myrtle Beach, SC

6009 Kings Hwy
Myrtle Beach, SC 29577
(843) 444-1020



www.rowepsc.com